

26,300
 6,800 PE/REC
 19,500 REC

EXISTING			
-	CARDIO	140%	35%
++	SELECTORIZED	35%	25%
--	FREE WT	25%	35%
-	CORE TRAINING		5%

DOUBLE CURRENT GYM & SPACE

FUNCTIONAL STRETCH
 MATS
 MEDICINE BALLS

SPACE STYLES

"MELO" SPACES TOGETHER. LOCKED - 25% (DIQUICK?)
 CUBBIES (LIKE "BACK ROOM"). CONVENIENCE
 "IN-ROOM". OPEN - 75%

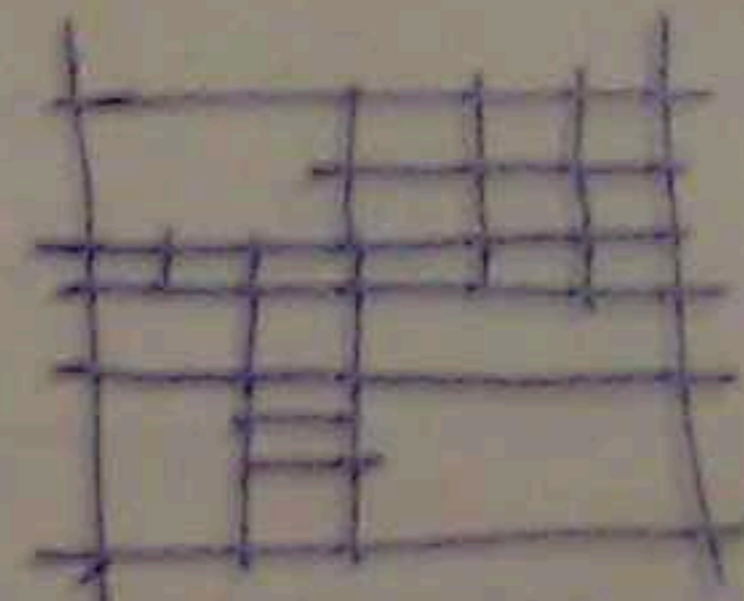
HAND SANITIZER.

TOWELS FOR CLEANING.

UNIVERSAL CLOCK SYSTEM NEEDED.

NEED GOOD SIGNAGE.

- REMINDERS.
- DRESS CODE
- SIGN UP POLICIES.
- EDUCATION.



NOT TOO BIG. EACH

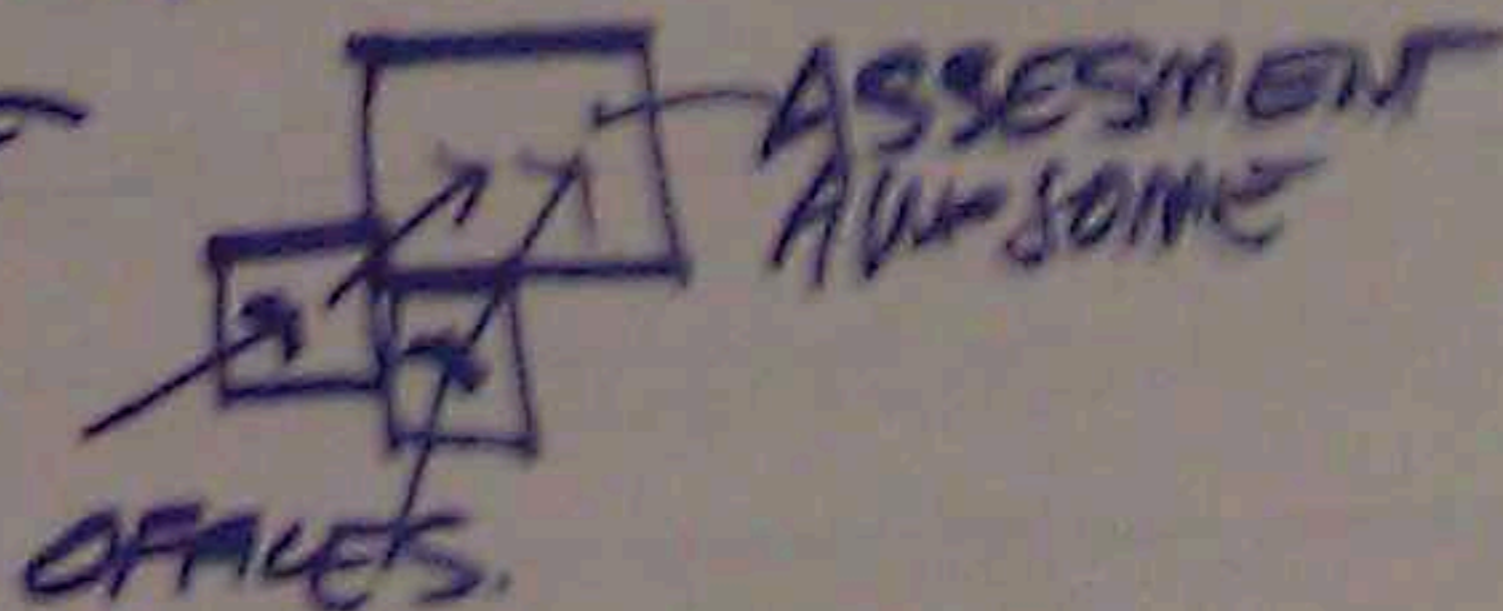
CARDIO THEATER - VS PERSONAL TV? (THINK BACK SPOTS)

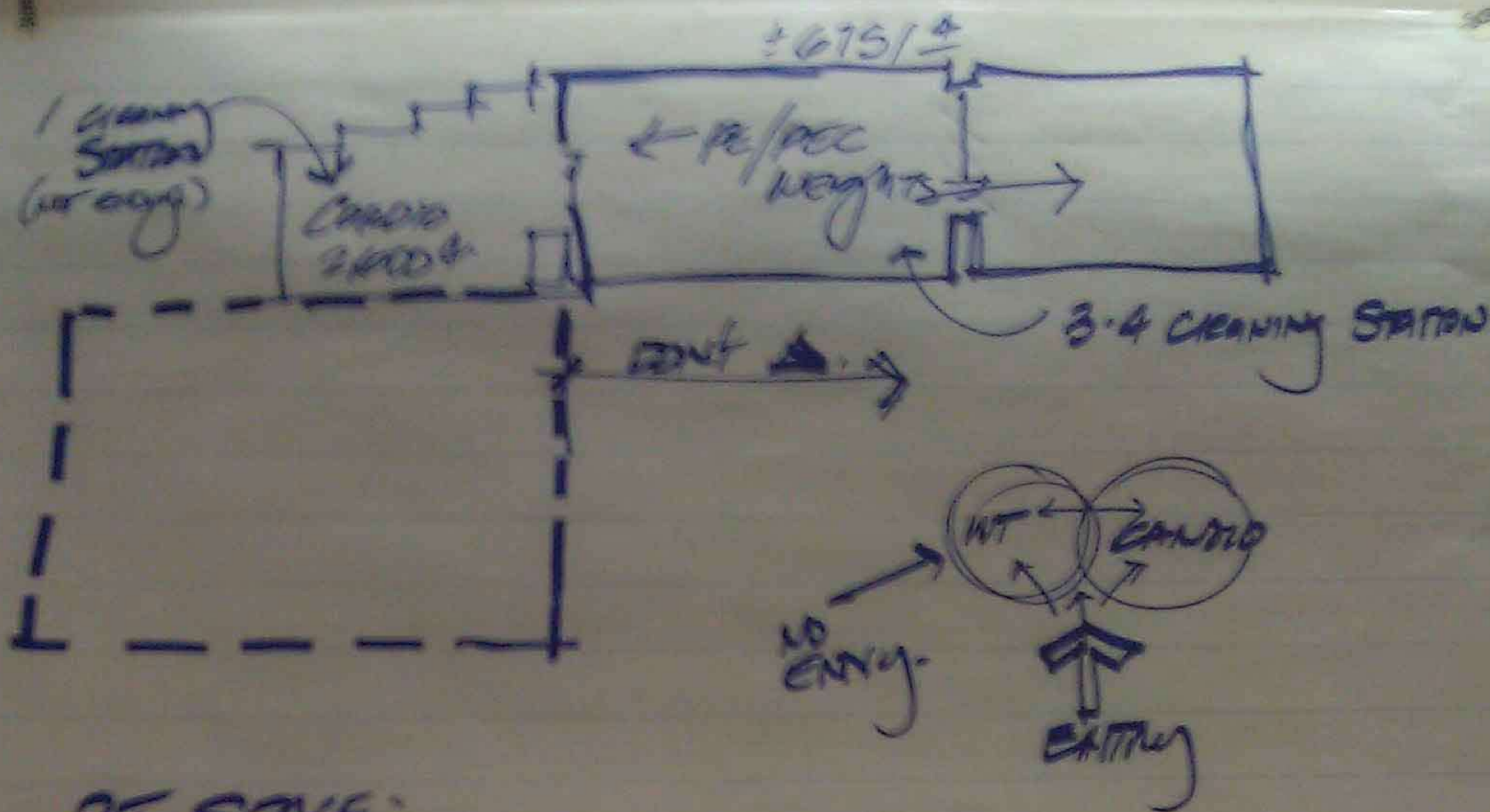
CUSTOMER SERVICE CENTER.

- FIRST AID, LOGS, STAFF MEMBER, MUSIC CENTER, "CUSTOMER"
- DIGITAL EQ RESERVATION APP?

PERSONAL TRAINING OFFICE

(ONE NOW, TWO FUTURE.)





PE SPACE

- LAYOUT NOT SO GOOD
- NEED RECH STATIONS
- NEED PE STORG (± 200 SF.)
- Like Floor
- Like Natural light
- NEED ISOLATION when class in session.
- CLASS SIZE = 40 W/ PEOPLE
- [9am - 12 & 1-3] M, TU, WE, TH.
- WANT DIGITAL RICH ROOM.
- BETTER ENTRY WIDTH

MISC EQ.
20 MEDICINE
40 DOWELLS
WHITE BOARD

EQ. REPORT

- SIZE = OK.
- HAVE = FLOOR.
- ENTRY SPACE @ OH-DOOR = LONGER
- MOVE TO WT ROOM FLOOR
- MAY NOT NEED PRIVATE OFFICE.

WEIGHTS & FITNESS

10/25/2011

26,600 \$ TOTAL

- + GOOD VISIBILITY @ STREET.
- + GREAT EAST VIEW
- + GOOD NATURAL LIGHT

NOTE: STAFF all ~~have~~ loaded eq.

- BETTER ~~ACTIVITY~~ ACCESS TO H₂O (LOCATION).

- NEED 1.5 TO 2x QTY.

- WATER BOTTLE FILING STATION (NOT JUST NECKS).

+ EWC'S NOT DF'S.

- NOISE TRANSFER PROBLEMS (FREE WT IMPACT NOISE - YUK!)
(PUT OVER STORAGE ONLY)

100% WEIGHTS & FITNESS. 75% vs 25% public private.

WANT MULTIPLE SPACES.

CONSIDER 3 SPACE ZONES.

DONT NEED DESK... JUST COUNTER or KIOSK.

MAINTAIN AUDITORY CONTROL.

WANT SOME CORE TRAINING SPACE

LOVE THE "MONDO"

AMBIANCE

CLEAN: ORGANIZED, CLEAN, "MODERN", TRANSPARENT.

EDGY: "HIP", COLOR, INDUSTRIAL.

WARM: WOOD TOUCHES.

WELCOMING:

OREGON FEEL! SCHOOL ("O") PRIDE.

SIMPLE STRONG GRAPHICS.